

FATIGUE LIFE OF SYNTHETIC NODULAR CAST IRONS AT HIGH FREQUENCY LOADING

Alan VAŠKO

Department of Materials Engineering, Faculty of Mechanical Engineering, University of Žilina

1. Introduction

Nodular cast iron is a group of cast structural materials with a wide application in engineering practice (especially in the automotive industry). It combines high tensile strength and plasticity with high fatigue strength. Nodular cast iron can be produced according to the classical or synthetic casting procedure (Fig. 1) which is more economical [1,2].

In recent years, the production of nodular cast iron has been from an economic point of view orientated to synthetic melts where a part of more expensive pig iron in a metal charge is substituted for cheaper steel scrap. The transition from the traditional use of pig iron (classical melts) to synthetic nodular cast iron prepared from steel scrap requires the regulation of chemical composition of melt. Steel scrap has low content of silicon therefore increasing of content of silicon to eutectic composition ($S_C \sim 1$) is reached by using of ferrosilicon (FeSi) or metallurgical silicon carbide (SiC) additive. Nowadays, there is the tendency to use metallurgical silicon carbide as a siliconizing as well as carburizing additive instead of ferrosilicon. SiC additive increases the count of crystallisation nuclei of graphite in the melt, consequently the count of graphitic nodules per unit of area is increased (the size of graphitic nodules is decreased) and at the same time the susceptibility to occurrence of carbide in the structure is decreased. Next influence of SiC additive is its ferritizing effect when the content of ferrite in the matrix is increased [3,4].

The technological foundry literature describes the addition of SiC to the cast iron melt frequently as having a special pre-inoculating effect [5,6]. This influence is well documented in the case of grey cast iron and has also been observed to some extent at laboratory as well as at industrial experiments in the case of nodular cast iron.

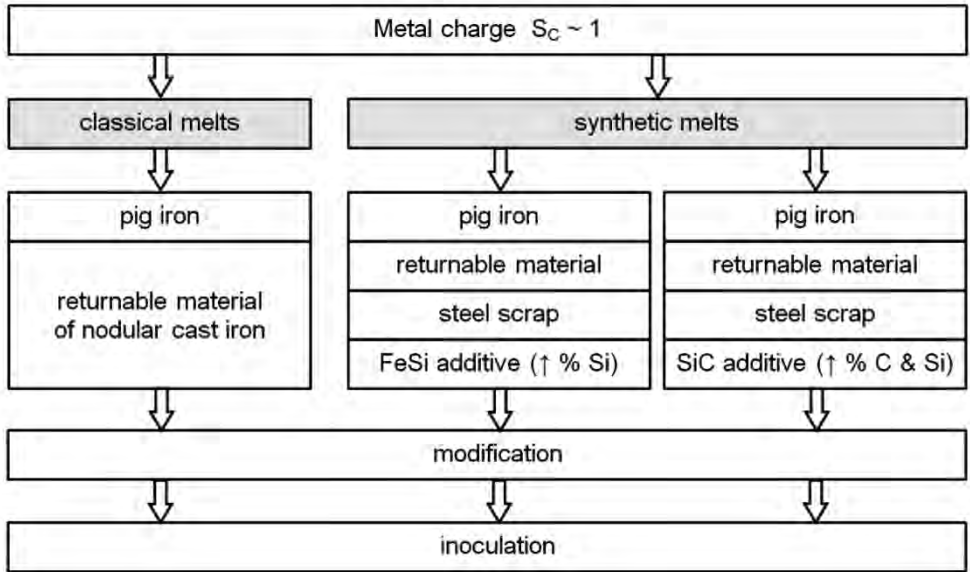


Fig. 1 Scheme of the production of nodular cast iron

The paper deals with the influence of charge composition on the microstructure, mechanical and fatigue properties and failure micromechanisms of nodular cast irons. The basic charge of experimental melts was formed by a different ratio of pig iron and steel scrap. Chemical composition of individual melts was regulated alternatively by metallurgical silicon carbide or ferrosilicon and carburizer.

2. Experimental material and methods

The specimens from four melts of nodular cast iron were used for experiments. The melts were different by charge composition (Tab. 1). The basic charge of individual melts was formed by different ratio of pig iron and steel scrap and by different additive for the regulation of chemical composition (metallurgical silicon carbide or ferrosilicon). The content of these additives was chosen to achieve approximately the same resultant chemical composition of the melts. For modification the FeSiMg7 modifier was used and for inoculation the FeSi75 inoculant was used.

Experimental bars (diameter 32 mm and length 350 mm) were cast from all the melts and consequently experimental specimens for tensile test, impact bending test, hardness test and fatigue tests were made.

Tab. 1 Charge composition of experimental melts

melt number	pig iron (%)	steel scrap (%)	additive	modification & inoculation
3	40	60	SiC90	FeSiMg7 + FeSi75
5	0	100		
8	40	60	FeSi75 + carburizer	
10	0	100		

The metallographic analysis of specimens from experimental melts was made by the light metallographic microscope Neophot 32. The microstructure of specimens was evaluated according to STN EN ISO 945 (STN 42 0461) and by automatical image analysis (using NIS Elements software) [7,8].

The tensile test was made according to STN EN ISO 6892-1 by means of the testing equipment ZDM 30 with a loading range $F = 0$ to 50 kN. The impact bending test was made according to STN EN ISO 148-1 by means of the Charpy hammer PSW 300 with a nominal energy of 300 J. The Brinell hardness test was made according to STN EN ISO 6506-1 by means of the testing equipment CV-3000 LDB with a hardmetal ball of diameter $D = 10$ mm forced into specimens under the load $F = 29\,430$ N (3000 kp) [9].

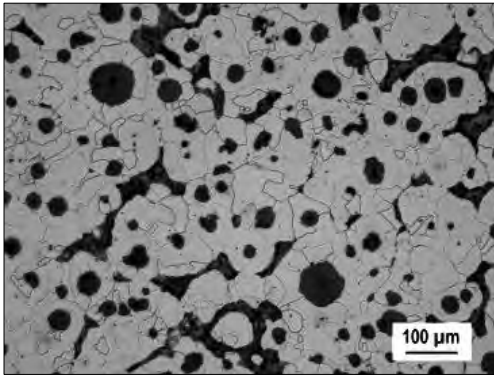
The fatigue tests were made according to STN 42 0362 at high-frequency sinusoidal cyclic push-pull loading (frequency $f \approx 20$ kHz, stress ratio $R = -1$, temperature $T = 20 \pm 5$ °C) using the ultrasonic testing equipment KAUP-ZU [10,11].

The microfractographic analysis was made by the scanning electron microscope VEGA II LMU on fracture surfaces of the specimens from experimental bars fractured by fatigue tests [12].

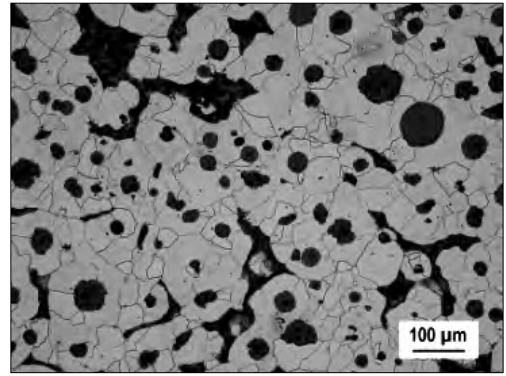
3. Experimental results and discussion

From a microstructural point of view, the specimens from all the melts are ferrite-pearlitic nodular cast irons with different content of ferrite and pearlite in the matrix, different size of graphite and count of graphitic nodules (Fig. 2). Different content of ferrite and pearlite in the matrix as well as different size of graphite and count of graphitic nodules in the individual specimens are caused by different ratio of steel scrap in the charge and kind of additive for the regulation of chemical composition (SiC or FeSi).

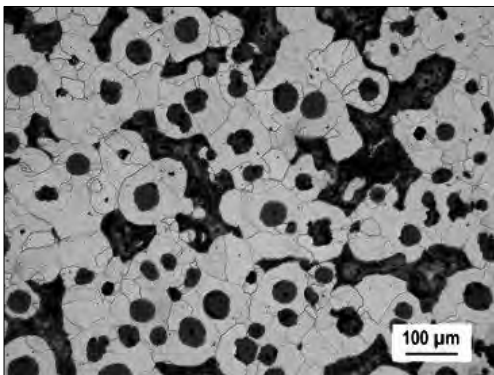
The results of evaluation of the microstructure of the specimens from cast bars according to STN EN ISO 945 (STN 42 0461) and by image analysis (content of ferrite and count of graphitic nodules) are presented in Tab. 2.



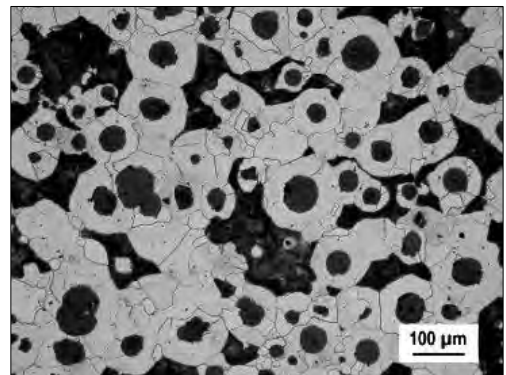
a) melt 3 (with SiC additive)



b) melt 5 (with SiC additive)



c) melt 8 (with FeSi additive)



d) melt 10 (with FeSi additive)

Fig. 2 Microstructure of the specimens from cast bars, etched 1% Nital

Tab. 2 Results of evaluation of the microstructure

melt number	microstructure according to STN EN ISO 945	content of ferrite (%)	count of graphitic nodules (mm ⁻²)
3	80%VI6 + 20%V6 – Fe94	74.0	199.8
5	70%VI5/6 + 30%V6 – Fe94	78.0	179.8
8	70%VI5/6 + 30%V6 – Fe80	65.2	151.0
10	70%VI5/6 + 30%V6 – Fe80	56.0	157.6

The results of mechanical tests, i.e. tensile strength R_m , elongation A , absorbed energy K and Brinell hardness HB , are given in Tab. 3. The specimens from the melts with SiC additive have better mechanical properties than the specimens from the melts with FeSi additive. It has connection with the microstructure of the specimens, especially

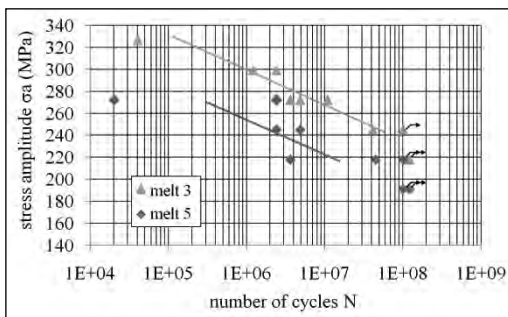
with the character of matrix (content of ferrite) and also with the size and count of graphitic nodules. The best mechanical properties were reached in the melt 3 created by 60 % steel scrap and SiC additive, which has the highest ratio of perfectly-nodular graphite, the smallest size of graphite and the highest count of graphitic nodules.

Tab. 3 Mechanical and fatigue properties

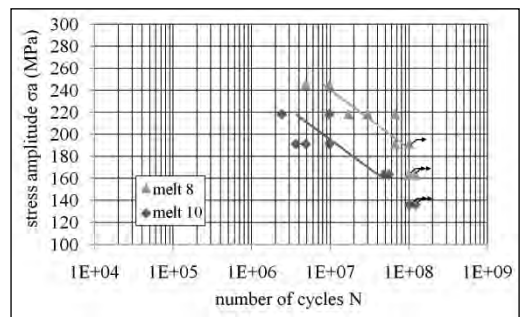
melt number	R _m (MPa)	A (%)	K (J)	HBW10/3000	σ _c (MPa)
3	539.0	4.0	30.6	192.3	218
5	515.7	3.7	17.2	182.3	191
8	462.6	2.7	24.0	181.3	163
10	462.6	2.7	19.2	183.0	136

For the fatigue tests, ten specimens from each melt were used to obtain Wöhler fatigue curves $\sigma_a = f(N)$ and determine fatigue strength σ_c for $N = 10^8$ cycles.

The results of fatigue tests (relationship between stress amplitude σ_a and number of cycles to failure N_f) are shown in Fig. 3. Obtained data were approximated by the Basquin function with using of least square method. The number of cycles to failure increases with a decreasing stress amplitude. The values of fatigue strength σ_c for $N = 10^8$ cycles are given in Tab. 3.



a) melts 3 and 5 (with SiC additive)

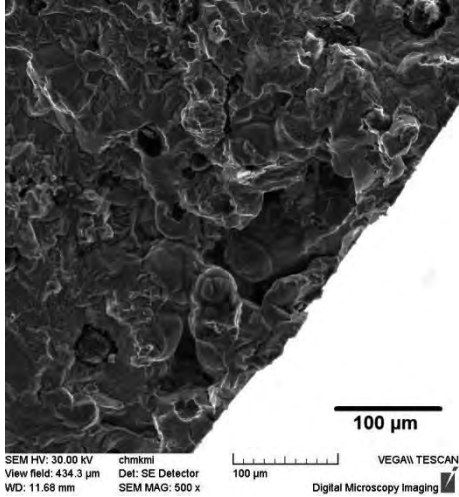


b) melts 8 and 10 (with FeSi additive)

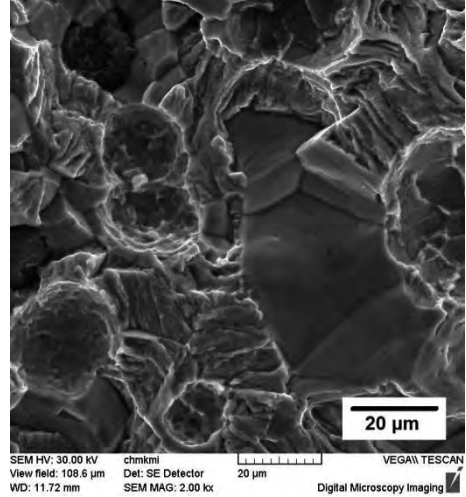
Fig. 3 Wöhler curves $\sigma_a = f(N)$

The fatigue strength in analysed specimens of nodular cast iron increases with an increasing tensile strength. The fatigue strength in the specimens from the melts with SiC additive is higher than in the specimens from the melts with FeSi additive. The highest fatigue strength (218 MPa) was reached in the melt 3 created by 60 % steel scrap and SiC additive, which has the best mechanical properties.

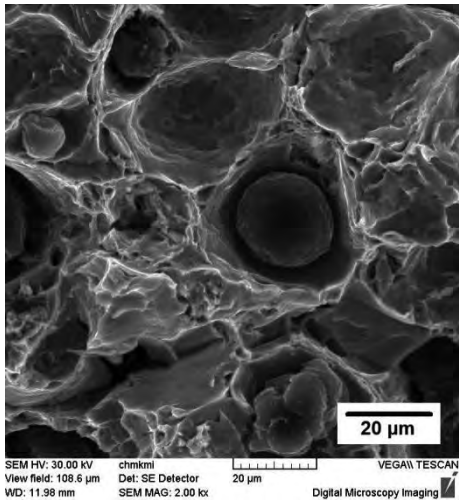
The fracture surfaces of analysed specimens after fatigue failure do not show any remarkable differences; they are characteristic of mixed mode of fracture. The fracture surface of the specimen from the melt 3 (with SiC additive) being loaded by stress amplitude $\sigma_a = 272$ MPa ($N_f = 1,1 \times 10^7$ cycles) is shown in Fig. 4.



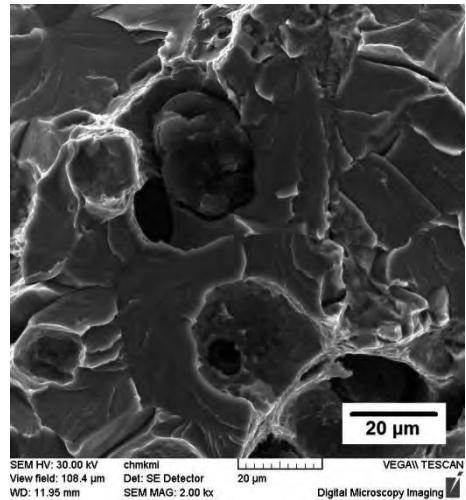
a) initiation of fatigue failure



b) trans- and intercrystalline fatigue failure



c) transcrystalline ductile failure



d) transcrystalline cleavage

Fig. 4 Fracture surface of the specimen from the melt 3 (with SiC additive), $\sigma_a = 272$ MPa, $N_f = 1.1 \times 10^7$ cycles, SEM

The fatigue fracture was initiated by casting defect (Fig. 4a). The fatigue fracture is characteristic of intercrystalline fatigue failure of ferrite around graphitic nodules and transcrystalline fatigue failure of ferrite and pearlite in the rest of the area (Fig. 4b). The final rupture is characteristic of transcrystalline ductile failure of ferrite with dimple morphology (Fig. 4c) and transcrystalline cleavage of ferrite and pearlite with river drawing on facets (Fig. 4d).

4. Conclusion

The results of the experiments show that the charge composition influences the microstructure, mechanical and fatigue properties of nodular cast iron.

The SiC additive positively influences the microstructure, it means the content of ferrite in the matrix is increased, the size of graphite is decreased and the average count of graphitic nodules per unit of area is increased; consequently the mechanical and fatigue properties of nodular cast iron are improved. The fatigue strength of nodular cast iron is increased with an increasing tensile strength. The best fatigue properties (fatigue strength) from the analysed specimens has the melt 3 created by 60 % steel scrap and 40 % pig iron in the basic charge with SiC additive.

Acknowledgments

This work has been supported by the grant projects VEGA No. 1/0533/15, KEGA No. 044ŽU-4/2014 and ITMS 26110230117.

Submitted: 20.4.2015

Literature

1. KONEČNÁ, R. – KONSTANTOVÁ, V. – NICOLETTO, G. *Sizing of defects and fatigue behavior of nitrided nodular cast irons*. Materials Science, p. 215-220, No. 3, (2008).
2. SKOČOVSKÝ, P. – PODRÁBSKÝ, T. *Graphitic cast irons*. Žilina, EDIS, (2005). (in Slovak).
3. BENECKE, T. – VENKATESWARAN, S. – SCHUBERT, W.D. – LUX, B. *Investigation of the influence of silicon carbide in the production of ductile cast iron*. Foundryman, p. 355-360, Vol. 87, (1994).
4. GERHARDT, R. *Properties and applications of silicon carbide*. Rijeka, InTech, (2011).
5. COPI, K.W. – LERNER, Y.S. – LAUKHIN, N.S. *SiC vs. 75% FeSi: Comparing pre-inoculation effects*. Modern Casting, p. 29-31, Vol. 93, (2003).
6. ZHANG, W.H. – DING, J. – NIE, F.R. *SiC inoculation pretreatment of cast iron*. Zhuzao/Foundry, p. 279-281, Vol. 58, (2009).
7. SKOČOVSKÝ, P. – VAŠKO, A. *Quantitative evaluation of structure of cast irons*. Žilina, EDIS, (2007). (in Slovak).
8. HURTALOVÁ, L. – BELAN, J. – TILLOVÁ E. – CHALUPOVÁ, M. *Changes in structural characteristics of hypoeutectic Al-Si cast alloy after age hardening*. Medžiagotyra, p. 228-233, No. 3, (2012).

9. VAŠKO, A. – SKOČOVSKÝ, P. *Properties and using of metal materials*. Žilina, EDIS, (2014). (in Slovak).
10. BOKŮVKA, O. – NICOLETTO, G. – GUAGLIANO, M. – KUNZ, L. – PALČEK, P. – NOVÝ F. – CHALUPOVÁ, M. *Fatigue of materials at low and high frequency loading*. Žilina, EDIS, (2014).
11. VAŠKO, M. - SÁGA, M. *Application of fuzzy structural analysis for damage prediction considering uncertain S/N curve*. Applied Mechanics and Materials, p. 21-29, Vol. 420, (2013).
12. KONEČNÁ, R. – HADZIMOVÁ, B. *Microfractography of nodular cast iron*. Transactions of Famaena, p. 59-65, Vol. 26, (2002).

Summary

Fatigue life of synthetic nodular cast irons at high frequency loading

Alan Vaško

The paper deals with comparison of microstructure, mechanical properties and fatigue properties of synthetic nodular cast irons with a different ratio of steel scrap in a charge. Chemical composition of individual melts was regulated alternatively by ferrosilicon (FeSi) and carburizer or metallurgical silicon carbide (SiC). The paper shows positive influence of SiC additive on the microstructure, mechanical properties as well as fatigue properties of nodular cast iron. The additive of metallurgical silicon carbide in analysed specimens increases the content of ferrite in the matrix, decreases the size of graphite and increases the average count of graphitic nodules per unit of area. Consequently, the mechanical and fatigue properties of nodular cast iron are improved.